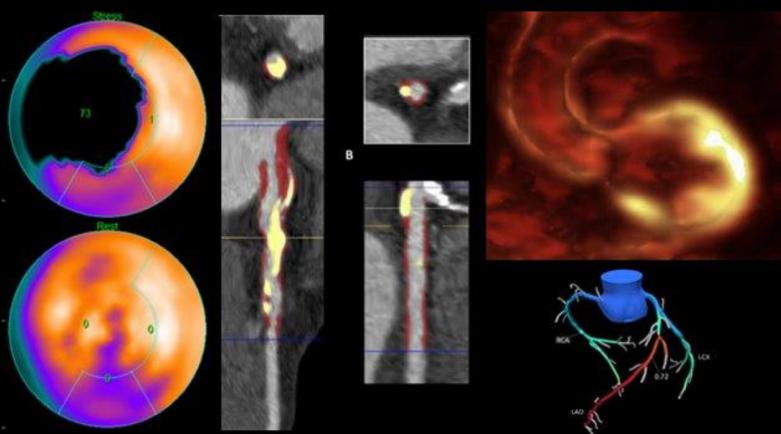


## Advances in Nuclear Cardiology, Cardiac CT and Cardiac MRI Annual Case Review with the Experts


[Overview](#)
[Faculty](#)
[Schedule](#)
[Brochure](#)
[Hotel](#)
[Exhibit at this Event](#)
[Sponsors / Exhibitors](#)
[Add to Calendar](#)

### Date & Location

Friday, January 17, 2020, 7:15 AM - Sunday, January 19, 2020, 2:15 PM, Cedars-Sinai Harvey Morse Conference Center, Los Angeles, CA

### Target Audience

*Specialties* - Cardiology, Imaging, Nuclear Medicine

### Overview

Advanced cardiac imaging with nuclear cardiology, cardiac CT, and cardiac MRI are changing rapidly in their scope and clinical utilization. How the technologies are used and how they provide value is the focus of this three day conference, which utilizes extensive case presentation as a means of learning. There is a need to fully understand the new evidence as changes in the evidence regarding their use. Physicians performing, interpreting the tests need to optimize their abilities, and those who order the tests need to be based on new evidence. We meet these educational needs through a live three-day symposium entitled: Advances in Nuclear Cardiology, Cardiac CT and Cardiac MRI: 35th Annual Case Review with the Experts.

**\*NEW SESSIONS for the 2020 program include THE ISCHEMIA TRIAL: IMPLICATIONS FOR CLINICAL PRACTICE, CARDIAC AMYLOIDOSIS, CARDIAC SARCOIDOSIS, MYOCARDIAL SPECT, AND CMR. The last day of the program focuses on expanding use of cardiac CT.**

### Sessions Include:

SESSION 1: INTERPRETING AND REPORTING SPECT/PET MPI CASES IN DAILY PRACTICE

SESSION 2: THE FUTURE OF NUCLEAR CARDIOLOGY

SESSION 3: RADIOPHARMACEUTICALS, CAMERAS, SOFTWARE, RADIATION

*SESSION 4: CARDIAC AMYLOIDOSIS: THE MOST RAPIDLY GROWING NUCLEAR CARDIOLOGY APPLICATION*

SESSION 5: MYOCARDIAL VIABILITY AND NUCLEAR CARDIOLOGY CASES

*SESSION 6: MYOCARDIAL BLOOD FLOW (MBF) and MYOCARDIAL FLOW RESERVE (MFR) WITH PET, SPECT and CMR*

*SESSION 7: SARCOIDOSIS and INFECTION*

SESSION 8: NEW AND FUTURE DEVELOPMENTS IN PET AND SPECT

**SESSION 9: THE ISCHEMIA TRIAL: IMPLICATIONS FOR CLINICAL PRACTICE**

SESSION 10: NUCLEAR CARDIOLOGY AND CARDIAC CT

SESSION 11: CMR: CURRENT AND FUTURE POTENTIAL

SESSION 12: CARDIAC CT: CURRENT STATUS and FUTURE APPLICATIONS

SESSION 13: BEST PAPERS AND BEST CASES

SESSION 14: CARDIAC CT IN AORTIC STENOSIS AND NON-CORONARY HEART DISEASE

[To view a detailed agenda, click here.](#)**Objectives**

1. Improve skills in image interpretation, including the recognition of imaging artifacts, and create optimal reports
2. Select patients for imaging studies based on recent guidelines and AUC
3. Understand clinical use of myocardial blood flow measurements with PET and SPECT
4. Know clinical role of nuclear cardiology in amyloidosis and sarcoidosis
5. Assess the use of coronary artery calcium scanning in prevention of CAD
6. Improve application of cardiac CT FFR, and perfusion
7. Evaluate the capabilities of cardiac MRI and the evidence supporting its use
8. Discuss implications of the ISCHEMIA Trial on stress imaging and cardiac CT

**Registration**

Registration is now closed.

Limited On-site registration will be taken based on space availability

Registration will begin at 7:15 AM in Harvey Morse Conference Center (South Tower, Plaza Level).

**Meeting Location:**

Cedars-Sinai Medical Center

[Harvey Morse Conference Center](#)

South Tower, Plaza Level

[8700 Gracie Allen Drive](#)[Los Angeles, CA 90048](#)**Parking:**

Self parking is available in the visitor parking lots P1, P2 or P4 for a daily rate of \$15.00.

[P1](#) on George Burns Road, North Tower, between Beverly Blvd and Alden Drive[P2](#) on George Burns Road, Spielberg Building, between Beverly Blvd and Alden Drive[P4](#) on Sherbourne Drive between 3rd St & Gracie AllenPlease refer to the campus map link: [Click Here](#)**Standard Fees**

Physicians	\$750
Non-physicians	\$500
Resident/Fellows	\$400

**To Pay by Check:**

Mail payment (with checks made payable to Cedars-Sinai Medical Center) to:

Cedars-Sinai Medical Center

Office of Continuing Medical Education

Attn: Registrations

700 N. San Vicente Blvd., Suite G550

West Hollywood, CA 90069

**Refund Policy:**All cancellations must be submitted in writing and refunds will be subject to an administrative charge. Please e-mail cancellation request to [cme@cshs.org](mailto:cme@cshs.org). If you do cancellation via e-mail, please call (310) 423-5548.**Accreditation**

Cedars-Sinai Medical Center is accredited by the Accreditation Council for Continuing Medical Education to provide continuing medical education for physicians.



#### Credit Designation Statement

Cedars-Sinai Medical Center designates this Live Activity for a maximum of 24.00 *AMA PRA Category 1 Credits*™. Physicians should claim only the credit commensurate with the activity.

#### Non-Physician Attendance

Non-physicians: A certificate of participation will be provided to other health care professionals requesting credits. Participants should ensure in advance that organization accepts *AMA PRA Category 1 Credits*™.

#### CE Credit for Technologist

The American Society of Nuclear Cardiology is a recognized provider of continuing education credit for technologists. ASNC's Continuing Education (CE) credit is an activity that has been approved by the American Society of Nuclear Cardiology for a maximum of 23.75 *ARRT Category A credits* for technologists.

#### ABIM MOC Recognition Statement

Successful completion of this CME activity, which includes participation in the evaluation component, enables the participant to earn up to 24.00 Medical Knowledge, Internal Medicine's (ABIM) Maintenance of Certification (MOC) program. Participants will earn MOC points equivalent to the amount of CME credits claimed for the activity. Participants are responsible to submit participant completion information to ACCME for the purpose of granting ABIM MOC credit.



#### Co-Sponsors

Co-sponsored by the American Society of Nuclear Cardiology, the Society of Cardiovascular Computed Tomography, the California Chapter of the American College of Cardiology and the International Academy of Cardiology.



California  
CHAPTER



Arizona  
CHAPTER



INTERNATIONAL  
ACADEMY OF  
CARDIOLOGY

#### Credits

*AMA PRA Category 1 Credit(s)*™ (MD, DO) (24.00 hours), Non-Physician Attendance (RN, NP, PA and Others) (24.00 hours), ABIM MOC Part 2 (24.00 hours)

Keywords: [LIVE](#) [MOC](#)

[Disclosure of Financial Relationships Form](#)

[CME Agent Forms](#)

[CME Application](#)

[Privacy](#) | [Accreditation](#) | [Cedars-Sinai CME Homepage](#)

Follow Us



[Join Our Email List](#) | Phone: 310-423-5548 | Email: [cme@cshs.org](mailto:cme@cshs.org)

© 2021 Cedars-Sinai. All Rights Reserved. A 501(c)(3) non-profit organization